




# READY TO JOIN?

 Call us at: 614-251-7820

 Email us at: [pathwayclubhouse@gmail.com](mailto:pathwayclubhouse@gmail.com)

 Visit in person at:  
1203 East Broad St.  
Columbus, OH  
43205

 Visit our website:  
[www.pathwayclubhouse.org](http://www.pathwayclubhouse.org)

# PATHWAY MEMBER HANDBOOK



# TABLE OF CONTENTS



Hours & Meetings .....	01
Welcome .....	02
Mission .....	03
Standards .....	04
Eligibility & Privacy .....	05
Rules .....	06
History .....	07
Work Units .....	08
Employment .....	11
Events .....	13



# SPECIAL EVENTS



Pathway Clubhouse is committed to the members' overall quality of life. Leisure time is also important and, therefore, collective gatherings are held to celebrate holidays, special occasions, and educational/cultural events. There are a variety of activities throughout the year: day trips, over-night excursions, festivals, and in-house celebrations. Most are free or low cost to members.







# HOURS & MEETINGS



- **Monday - Friday: 8:00 AM- 5:00 PM**
- **Morning Clubhouse Meeting: Daily at 9:30 AM**
- **Lunch: Daily at 12:00 PM**
- **Afternoon Unit Meeting: Daily at 1:00 PM**
- **Clubhouse Member Meeting: Thursdays at 1:00 PM**

*Afterhours, weekend, and holiday activities as scheduled*

**Please join us for meetings - your voice matters!**



## WELCOME!



Pathway Clubhouse is a community-based program of psychosocial rehabilitation for people who have mental illness. The Clubhouse model began in New York in 1948 with Fountain House and has grown nationally and internationally as a holistic approach empowering people living with mental illness. Pathway Clubhouse is certified by Clubhouse International and our vocational program is nationally accredited by CARF. Membership in the Clubhouse is lifelong and is at the member's discretion.



Opportunities for social interaction, developing relationships, employment, education, and building community are integral to the holistic approach of the Clubhouse model. Members and staff work side by side doing the necessary work to run the Clubhouse. In addition, to satisfy the need for meaningful activity, the Clubhouse offers Supported Employment positions in the community and Transitional Employment Placements, which are 6 to 12 months long job positions. The Clubhouse supports members in obtaining and sustaining independent employment.



## EMPLOYMENT OPPORTUNITIES



1.

### Transitional Employment Placement (T.E.P)

Transitional Employment is a unique and essential feature of Clubhouses. TEP positions provide an opportunity for all members to be introduced or reintroduced to employment. Pathway Clubhouse has secured part time, paid jobs with several local businesses. These job experiences are time-limited and last from 6 to 12 months. Members choose to participate in TEP's when they think they are ready. These members continue to be a vital part of the Clubhouse.

2.

### Supported Employment (S.E.)

Supported Employment focuses on developing a ready-to-work mindset. The Clubhouse assists Members with preparing resumes and completing applications. The jobs members obtain are their own for as long as they wish to have them. The Clubhouse will assist members with advocating for themselves and overcoming any obstacles during their employment.

3.

### Independent Employment (I.E.)

Many members of the Clubhouse already have or wish to obtain a job on their own. The Clubhouse will continue supporting the members during their Independent Employment and the members will have the same access to every Clubhouse opportunity.





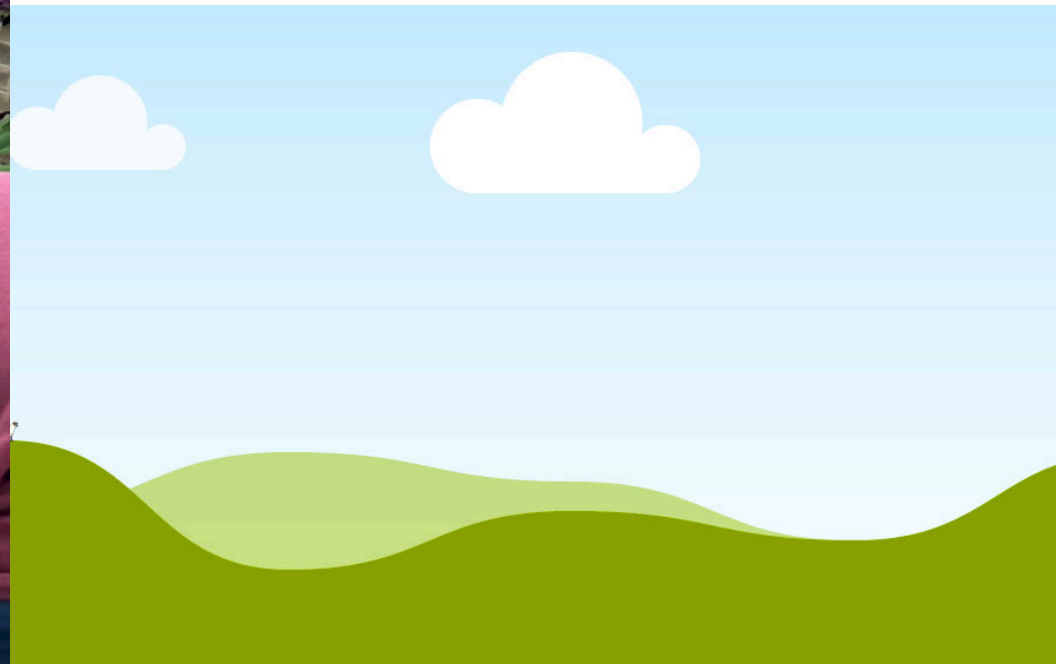


## PATHWAY'S MISSION



To maximize and strengthen our members' independence in working, living, and socializing in the community.

This is accomplished through our Cultural Awareness and Rehabilitative services that emphasize the building of skills, respect, friendship, teamwork, and the celebration of individual achievements.





# CLUBHOUSE STANDARDS

Pathway Clubhouse follows 36 standards set by Clubhouse International, including:



● Membership is open to anyone with mental illness

● Membership is voluntary



● All work in the Clubhouse is designed to help members regain self-worth, purpose, and confidence

● Members choose the way they use the Clubhouse



● Members have equal access to every Clubhouse opportunity

The Clubhouse guarantees its members the right to meaningful relationships, the right to meaningful work, and the right to a place to return.



## UPPER LEVEL:

- Employment
- Attendance
- Reach-out
- Record keeping
- Finance / Banking
- Marketing



Units give members the ability to choose their own destiny at the Clubhouse and encourage members to determine their own working habits.





The Clubhouse is separated into two units. Members can choose which unit they wish to work within at the morning meeting each day and change their work units any time.



## LOWER LEVEL:

- Reception desk
- Food Service
- Coffee Shop
- Gift shop - Treasures on Broad
- Library
- Orientation



## ELIGIBILITY & PRIVACY



To become a member of the Clubhouse you must be a resident of Franklin County, be 18 years or older, have a mental illness, and are receiving treatment. There are no fees for membership in the Clubhouse. There may be fees associated with special events if you choose to participate. You will be notified in advance of any events that include a fee.

Please refer to the Notice of Privacy that you received with your intake materials for detailed information on your privacy rights. Staff are required to report to the appropriate authorities any suspected abuse and/or neglect of animals, children, the elderly, or developmentally disabled individuals.



## PATHWAY RULES



Pathway Clubhouse policies prohibit all tobacco products, including electronics/vapor cigarettes inside the building and requests that any smoking be done away from the entrance. Use or possession of alcohol or illicit drugs is prohibited on Clubhouse property. Any legal substances and prescription drugs brought on to the property must be kept in the member's possession while attending the Clubhouse.

Weapons of any kind are prohibited on agency property. Only law enforcement officers in the performance of their duties are permitted to possess or carry firearms or weapons. Please be aware that weapons brought onto Clubhouse property in violation of this policy may be turned over to the police department for disposition. Physical aggression and verbally threatening behavior are not permitted.

Pathway Clubhouse does not use mechanical restraint, seclusion, chemical restraint, or major aversive behavioral interventions. Concord staff may utilize verbal de-escalation training procedure in order to intervene with a member experiencing behavioral difficulties. At no time will Clubhouse staff utilize cruel and/or unusual punishment to manage a member, including physical and verbal abuse.

Any individual involved in criminal activity while on Pathway Clubhouse premises or while in the community with Clubhouse staff is subject to legal prosecution to the fullest extent of the law. Services may also be Suspended or terminated. Members who violate these policies will be informed of any suspension or termination and will receive information about how services may be reinstated, if applicable.

See the good in yourself  
and in others. Everything's  
better when we're together.



## PATHWAY HISTORY

Pathway Clubhouse initially started out as an Intermediate Care facility on Champion Avenue. It evolved into a Day Treatment program serving mental health consumers until 1990. The 1990's saw many changes in the mental health system, as community treatment teams were developed and many people experienced a new sense of freedom and independence. In 1991 Pathway voted to change their programming to become the first clubhouse in Columbus, Ohio.

Throughout the 1990's Pathway followed the psycho-social clubhouse model that was incorporated in New York City with the founding of the original clubhouse "Fountain House". We became CARF (Commission on Accreditation of Rehabilitation Facilities) accredited. There was great success in obtaining employment for members with the establishment of transitional employment (TE), supported employment (SE) and independent job sites.

Throughout the early 2000's until 2015 Pathway continued to provide psycho-social clubhouse services, as well as case management and employment opportunities. Due to funding issues, we were unable to become fully accredited in the clubhouse model until 2015 when a local faith based organization called B.R.E.A.D. (Building Responsibility, Equality and Dignity) selected mental health services as their official cause that year. Their slogan was "Care, not Crisis" and they researched what services impact the mental health community. They visited Magnolia Clubhouse in Cleveland and learned that clubhouses provide an array of services that assist members with improving the quality of life, reduce hospitalizations, incarcerations and increase the likeliness of being employed and housed. They advocated the local mental health system for an accredited clubhouse in Franklin County.

In 2018, Pathway Clubhouse became officially accredited with Clubhouse International and has thrived as a beacon for those living with mental illness. In 2019 we became part of the Concord Counseling Services' family and our missions are perfectly aligned.

During the Covid-19 pandemic, we navigated the challenges by starting a "virtual clubhouse" to keep all of the colleagues connected. We started a coalition with other Ohio clubhouses, now known as ClubhouseOhio. Since returning to in-person services we have strengthened our relationships with our Franklin County community. In the most recent years we advocated with the state of Ohio mental health system to allocate funds to start new clubhouses around the state. As of 2024 there are now 6 new clubhouses starting up!

